

REMOVE ALL BURRS & SHARP EDGES

DRAWING NUMBER

Sheet 1 of 1

TITLE.

LUMEN EXTRA LIGHT
LINKED SYSTEM

MATERIAL.

3MM ZINTEC

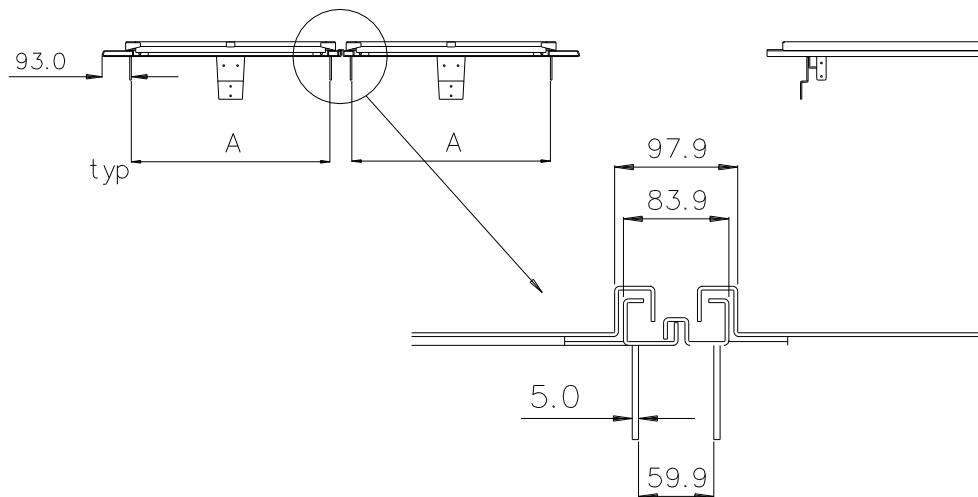
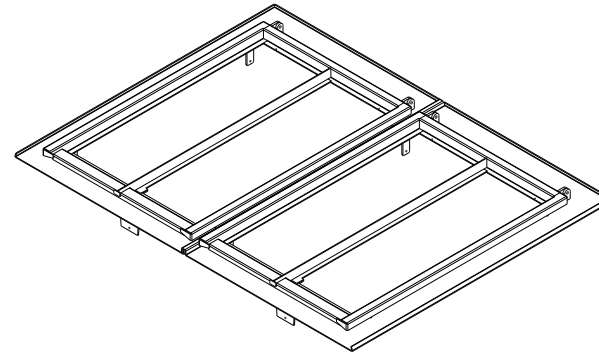
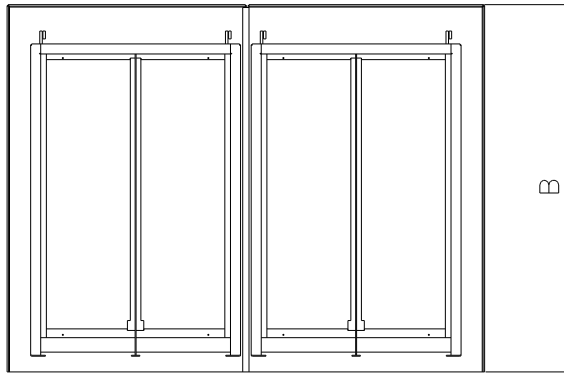
FINISH.

BLACK TEXTURE

NOTE.

LR-4 SHOWN
REFER TO TABLE FOR
OTHER STANDARD SIZES

ISSUE COMMENTS.



	DIM A	DIM B
LR1	405	753
LR2	482	870
LR3	482	1021
LR4	632	1169
LR5	786	1169
LR6	938	1481

DRAWN.

CMT DESIGN

DATE.

23-06-07

ALL DIMENSIONS ARE IN MILLIMETRES
DIMENSION TOLERANCE,
GENERAL TOLERANCE $\pm 0.25\text{mm}$
ANGULAR TOLERANCE $\pm 0.5^\circ$

THIRD ANGLE



DO NOT SCALE

The information in this drawing is
copyright of Tuscan Foundry Products

PAPER SIZE =

REMOVE ALL BURRS & SHARP EDGES

DRAWING NUMBER

Sheet 1 of 1

TITLE.

LUMEN EXTRA LIGHT
LINKED SYSTEM

MATERIAL.

3MM ZINTEC

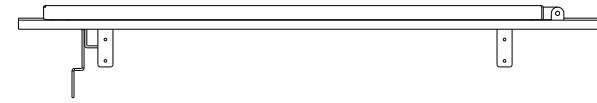
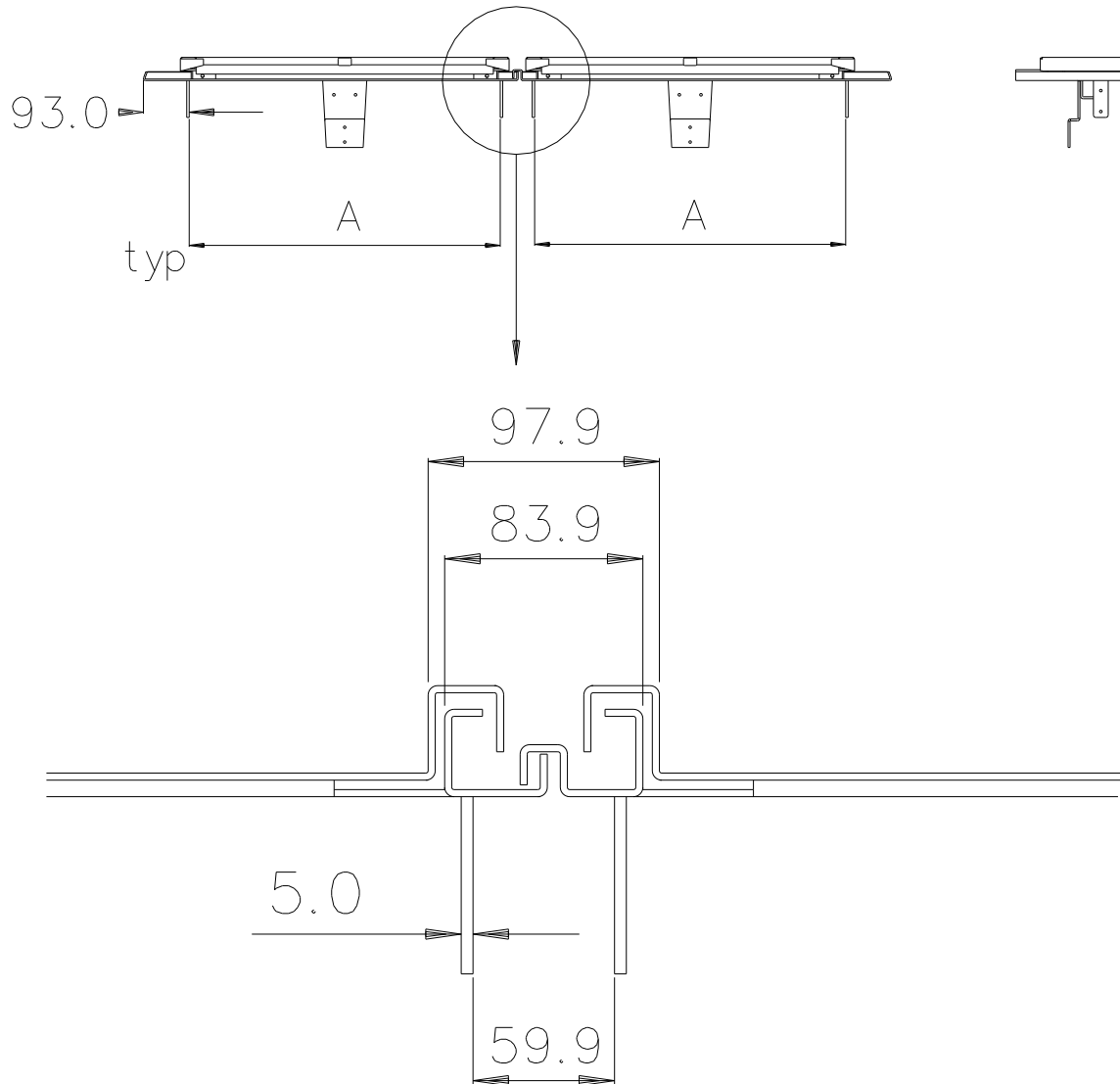
FINISH.

BLACK TEXTURE

NOTE.

LR-4 SHOWN
REFER TO TABLE FOR
OTHER STANDARD SIZES

ISSUE COMMENTS.



Note;
For Dimension B see
Stock Size Linked Frame
Drawing

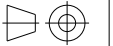
	DIM A	DIM B
LR1	405	753
LR2	482	870
LR3	482	1021
LR4	632	1169
LR5	786	1169
LR6	938	1481

DRAWN. CMT DESIGN

DATE. 23-06-07

ALL DIMENSIONS ARE IN MILLIMETRES
DIMENSION TOLERANCE,
GENERAL TOLERANCE $\pm 0.25\text{mm}$
ANGULAR TOLERANCE $\pm 0.5^\circ$

THIRD ANGLE

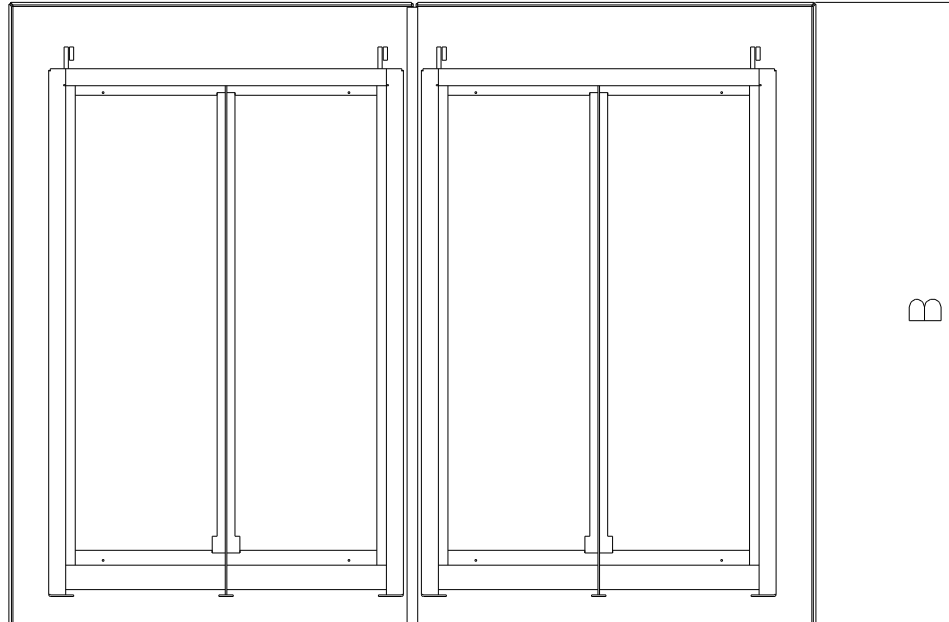
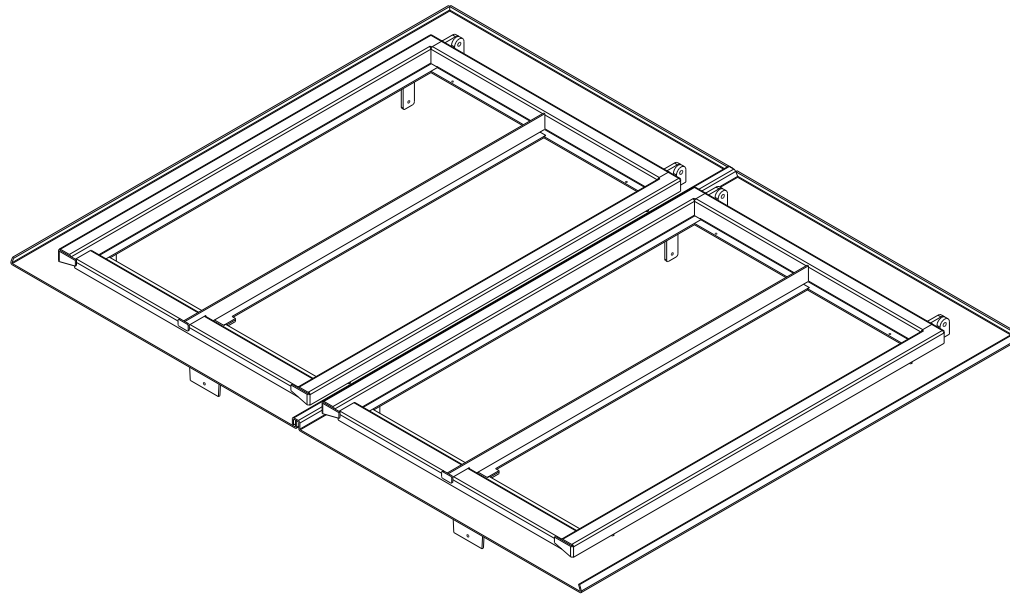


DO NOT SCALE

The information in this drawing is
copyright of Tuscan Foundry Products

PAPER SIZE =

REMOVE ALL BURRS & SHARP EDGES



DRAWING NUMBER

Sheet 1 of 1

TITLE.

LUMEN EXTRA LIGHT
LINKED SYSTEM

MATERIAL.

3MM ZINTEC

FINISH.

BLACK TEXTURE

NOTE.

LR-4 SHOWN
REFER TO TABLE FOR
OTHER STANDARD SIZES

ISSUE COMMENTS.

Note;
For Dimension A see
Stock Size Linked Section
Drawing

	DIM A	DIM B
LR1	405	753
LR2	482	870
LR3	482	1021
LR4	632	1169
LR5	786	1169
LR6	938	1481

DRAWN.

CMT DESIGN

DATE.

23-06-07

ALL DIMENSIONS ARE IN MILLIMETRES
DIMENSION TOLERANCE,
GENERAL TOLERANCE $\pm 0.25\text{mm}$
ANGULAR TOLERANCE $\pm 0.5^\circ$

THIRD ANGLE



DO NOT SCALE

The information in this drawing is
copyright of Tuscan Foundry Products

PAPER SIZE =